

**WILLCOM 201HW**  
User Guide



## 201HW User Guide Contents

Introduction.....	3
<b>Getting Started</b>	
Package Contents.....	6
Parts & Functions.....	6
USIM Card Installation.....	7
SD Card Installation.....	9
Battery Installation.....	11
Charging Battery.....	13
Power On/Off.....	14
Touchscreen Operations.....	14
<b>Basic Operations</b>	
Basic Operations.....	16
Handset Phone Number.....	17
Mobile Manners.....	17
Text Entry.....	18
Google Account.....	19
Google Play™.....	20
Security Codes.....	22
USIM PIN.....	22
Screen Lock.....	23
Software Updates.....	24
<b>Handset Interface</b>	
Home Screen Basics.....	26
Status Bar.....	27
Notifications Window.....	28
<b>Phone</b>	
Calling.....	30
Optional Services.....	31
Address Book.....	35
<b>Messaging &amp; Browser</b>	
Messaging.....	38
Sending WILLCOM Mail/SMS.....	38
Creating/Sending Gmail.....	40
Internet Mail Settings.....	41
Web Browsing.....	41
<b>Camera</b>	
Imaging.....	46
<b>Music &amp; Images</b>	
Music Files.....	50
Image Files.....	50
<b>Connectivity</b>	
Wi-Fi.....	52
Tethering Option.....	53
Bluetooth®.....	54

## Global Services

Calling Outside Japan.....	56
----------------------------	----

## Settings

Wireless & Networks Settings.....	60
Bluetooth Settings.....	60
Data Usage Settings.....	61
More Settings.....	62
Sound Settings.....	63
Battery Settings.....	64
Power Saving Mode Settings.....	65
Apps Settings.....	65
Accounts & Sync Settings.....	66
Language & Input Settings.....	66
Backup & Reset Settings.....	68
Date & Time Settings.....	68
Developer Options Settings.....	69
Fast Boot Settings.....	70
About Phone.....	70

## Appendix

Specifications.....	74
Materials.....	74
Customer Service.....	75

## Safety Precautions

Safety Precautions.....	78
General Notes.....	83
RF Exposure Information/Specific Absorption Rate* (SAR) Information.....	86

## Introduction

---

Thank you for purchasing 201HW.

### Before You Begin

- 201HW is referred to as "handset" in this guide.
- Read "Safety Precautions" and this guide thoroughly beforehand for proper usage.
- Accessible services may be limited by contract conditions or service area.
- Unauthorized copying of any part of this guide is prohibited.
- Guide content subject to change without prior notice.
- Contact WILLCOM Service Center, General Information if you find inaccuracies.

### Guide Usage Notes

- Most operation descriptions are based on default settings.
- Unless noted otherwise, descriptions are for Home Screen.
- Some operation descriptions may be omitted.
- In this guide and on handset, "abroad" means "outside Japan" with regard to handset/service usage.
- In this guide, microSD/microSDHC Card is referred to as "SD Card."

### Screenshots & Key Labels

Screenshots and Key labels are provided for reference only.  
Actual handset windows, menus, etc. may differ in appearance.



## Getting Started

Package Contents.....	6
Parts & Functions.....	6
USIM Card Installation.....	7
SD Card Installation.....	9
Battery Installation.....	11
Charging Battery.....	13
Power On/Off.....	14
Touchscreen Operations.....	14

## Package Contents

---

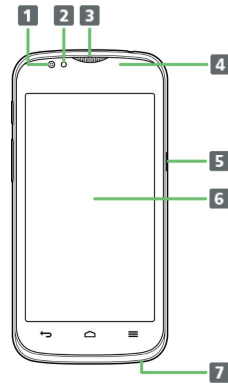
### Package Contents

- Handset (201HW)
- Battery
- AC Charger
- Micro USB Cable
- Earphone with Mic
- 4 GB microSD Card (Complimentary Sample)
- お願いとご注意 (Japanese)
- Warranty (Japanese)

## Parts & Functions

---

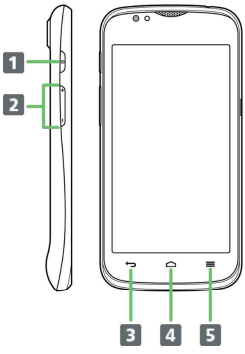
### Front/Top/Bottom



Part	Description
<b>1</b>	



## Handset Keys

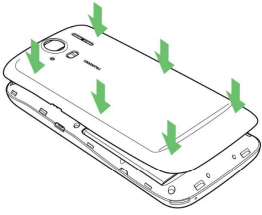


Part	Description
------	-------------

**1**  
.....

5

Close Battery Cover



- Press and close firmly as shown leaving no gaps.

Removing USIM Card

1

## SD Card Installation

---

Handset accepts a microSDHC/microSD Card up to 32 GB. Some SD Cards may not operate properly.

### Inserting SD Card

Always power off first.

**1**

## Removing SD Card

Always perform Unmount SD Card and power off first.

1

5

Erase everything



Removing Battery

1

## Charging Battery

---

Battery must be inserted in handset to charge it.

### AC Charger

1

## Power On/Off

---

Power On

1



## Basic Operations

Basic Operations.....	16
Handset Phone Number.....	17
Mobile Manners.....	17
Text Entry.....	18
Google Account.....	19
Google Play™.....	20
Security Codes.....	22
USIM PIN.....	22
Screen Lock.....	23
Software Updates.....	24

## Basic Operations

### Home Screen & Launcher

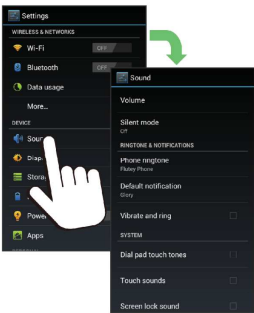
Home Screen top sheet appears at power on. Most handset operations start from Home Screen sheets or Launcher pages.



### Handset Navigation

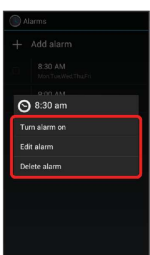
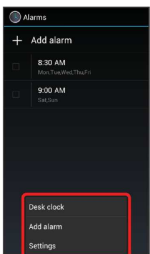
Tap menu items, icons, onscreen key, etc. to open assigned items,

- Press to go back or escape.



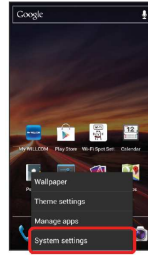
### Menu Operations

Press for options. Alternatively, Touch & Hold Display for settings.



### Handset Settings

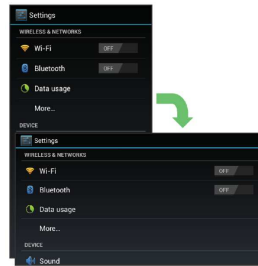
In Home Screen, Press and Tap **System settings** to customize settings.



### Handset & Display Orientation

In most cases, Display orientation changes with handset orientation.

- Some application content may not change with handset orientation.



### Capturing Screenshots

Long Press and at the same time with SD Card inserted to capture a screenshot of current Display.

- Open captured screenshots from Screenshots album, etc. in Gallery.

## Handset Phone Number

---

My Phone Number

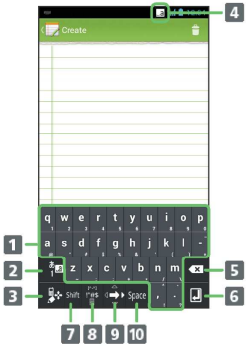
1

## Airplane Mode

Disable all signal-transmitting functions while powered on.

1

# QWERTY Layout



---

Follow onscreen instructions



Updating Installed Applications

1



## Security Codes

### Security Codes

Some functions/services require these codes for use.

- Do not reveal Security Codes, WILLCOM is not liable for misuse or damages.
- If you forget Security Codes, contact us for recovery. For more information, see [WILLCOM Service Center](#).

Types	Details
Center Access Code	4-digit code in service contract: Change services; use Optional Services via landlines; or set call restrictions
PIN	User settable: Use/change some handset functions/ settings 9999 by default: Use Security Lock functions

## USIM PIN

Use to prevent use by third parties without permission. It is set to 9999 by default.

### Enabling USIM Card Lock

1



Changing USIM PIN

1

## Software Updates

---

Look for available updates. Update as required.

### Software Updates

1

## Handset Interface

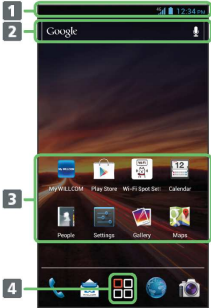
Home Screen Basics.....	26
Status Bar.....	27
Notifications Window.....	28

## Home Screen Basics

---

Home Screen top sheet appears at power on; most operations start here.

### Layout



# Status Bar

Status Bar appears at the top of Display.

## Status Bar



## Notifications Window

---

Open notifications (missed call, etc.), check handset status or change various settings.

### Opening Notifications Window

1

## Phone

Calling.....	30
Optional Services.....	31
Address Book.....	35

## Calling

---

Learn calling basics, including handling incoming calls, and in-call operations.

### Placing Calls

1





Call Forwarding

1

## Call Waiting

Requires separate subscription.

1

Caller ID

1

4

Tap conditions for incoming/outgoing restrictions →

Security Password → **Enable**





## Messaging & Browser

Messaging.....	38
Sending WILLCOM Mail/SMS.....	38
Creating/Sending Gmail.....	40
Internet Mail Settings.....	41
Web Browsing.....	41

## Messaging

### WILLCOM Mail

Exchange long text e-mail messages with PHS handsets, other mobile providers' terminals, computers/other e-mail-compatible devices. Attach media files for multimedia messaging.

### SMS

Exchange short text messages (up to 140 single-byte characters) using handset phone numbers as addresses.

### Gmail

Gmail is Google's webmail service. Handset automatically syncs with Gmail.

### Internet Mail

Use Internet Mail (POP3/IMAP4) on handset.

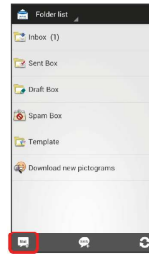
- Set up Internet Mail accounts beforehand.
- Exchanging Internet Mail via handset syncs handset and mail server.

## Sending WILLCOM Mail/SMS

### Sending WILLCOM Mail

1

In Home Screen,    (WILLCOM Mail)  





2

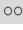
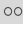



- Enter phone numbers or e-mail addresses directly in Recipient field.

3

Select recipient  



- Tap **People** then **Outgoing History** / **Incoming History** to select recipients.
- After entering recipients, Tap  to check recipient numbers or e-mail addresses, or set recipients to Cc or Bcc.
- After entering recipients, Tap  then  to delete them.



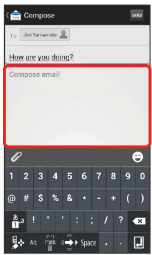
4

Tap Subject field → Enter subject



5

Tap Message field → Enter text



6

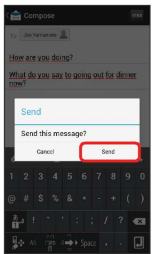
SEND



• Before sending WILLCOM Mail, press ↶ to save messages as a draft. Follow onscreen instructions.

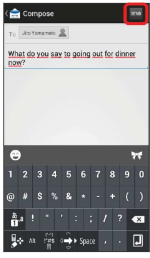
7


Send



5

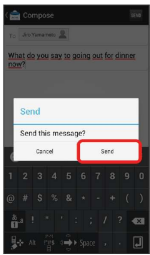
SEND



- Before sending SMS, Press  to save message as a draft. Follow onscreen instructions.

6

Send



## Internet Mail Settings

---

### Adding Accounts

1

Adding Bookmarks

1



[Redacted text]

[Redacted text]

[Redacted content]



## Camera

Imaging.....46

## Imaging

---

### Capturing Photos

1







## Music & Images

Music Files.....	50
Image Files.....	50

## Music Files

---

### Playing Music Files

1

## Connectivity

Wi-Fi.....	52
Tethering Option.....	53
Bluetooth®.....	54

## Wi-Fi

---

Use household Wi-Fi networks, etc. to connect to the Internet.

### Connecting to Wi-Fi Networks

Select from available networks to establish a connection.

1

## Tethering Option

---

### About Tethering Option

Use handset like a Wi-Fi router to connect to the Internet from a PC or game device.

- Requires separate subscription.
- Use after confirming that handset is updated to the latest software.

### Starting Up Tethering Option

1

## Bluetooth®

---

Connect handset to other Bluetooth® devices for wireless connectivity.

### Activating Bluetooth®

- Handset may not pair with all Bluetooth® devices.
- Some paired devices may not operate correctly.
- Noise may occur when using wireless/handsfree devices.

1



## Global Services

Calling Outside Japan..... 56

## Calling Outside Japan

---

### International Calling

1

## Global Roaming

Place calls the same way you would within Japan.

- Do not enter country code or omit first 0 from phone numbers.

1



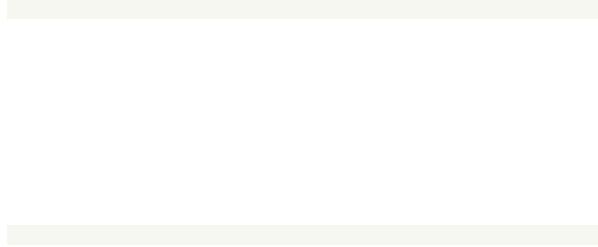
## Settings

Wireless & Networks Settings.....	60
Bluetooth Settings.....	60
Data Usage Settings.....	61
More Settings.....	62
Sound Settings.....	63
Battery Settings.....	64
Power Saving Mode Settings.....	65
Apps Settings.....	65
Accounts & Sync Settings.....	66
Language & Input Settings.....	66
Backup & Reset Settings.....	68
Date & Time Settings.....	68
Developer Options Settings.....	69
Fast Boot Settings.....	70
About Phone.....	70



## Wireless & Networks Settings

---

### Wireless & Networks Settings



### Change Name of Paired Device

In Home Screen,  → **System settings** → **Bluetooth** → Paired device  → **Rename** → Enter name → **OK**



- Pictograms cannot be used in device name.
- **Bluetooth** must be enabled to use this setting.

### Unpair Device

In Home Screen,  → **System settings** → **Bluetooth** → Paired device  → **Unpair**

- **Bluetooth** must be enabled to use this setting.

### Enable/Disable Paired Device Service

In Home Screen,  → **System settings** → **Bluetooth** → Paired device  → Tap item in PROFILES area



- If confirmation appears, follow onscreen instructions.
- **Bluetooth** must be enabled to use this setting.
- Tap item to toggle setting On () / Off ()

### Search for Pairable Devices

In Home Screen,  → **System settings** → **Bluetooth** → **SEARCH FOR DEVICES**


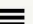
- **Bluetooth** must be enabled to use this setting.

### Change Name Appearing on Paired Devices

In Home Screen,  → **System settings** → **Bluetooth** →  → **Rename phone** → Enter name → **Rename**

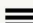
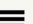
- **Bluetooth** must be enabled to use this setting.

### Set Time Handset is Visible to Other Devices

In Home Screen,  → **System settings** → **Bluetooth** →  → **Visibility timeout** → Tap setting

- **Bluetooth** must be enabled to use this setting.
- Tap **Never time out** to keep handset always visible.

### Open File Received by Bluetooth® Transfer







In Home Screen,  → **System settings** → **Bluetooth** →  → **Show received files** → Follow onscreen instructions

## Data Usage Settings

### Data Usage Settings

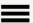







### Enable/Disable Restriction on Mobile Data Communication in Background

In Home Screen,   System settings  Data usage    Restrict background data

- Tap **Restrict background data** to toggle setting On () / Off ()
- If confirmation appears, follow onscreen instructions.
- **Set mobile data limit** must be enabled to use this setting.

### Enable/Disable Restriction on Mobile Data Using Wi-Fi

In Home Screen,   System settings  Data usage    Show Wi-Fi usage

- Tap **Show Wi-Fi usage** to toggle setting On () / Off ()
- Enable **Show Wi-Fi usage** to add **WI-FI** tab at top. Tap to set restriction on mobile data using Wi-Fi.

## More Settings

---

More Settings









## Power Saving Mode Settings

---

Power Saving Mode Settings



## Accounts & Sync Settings

---

Accounts & Sync Settings





## Backup & Reset Settings

---

### Backup & Reset Settings

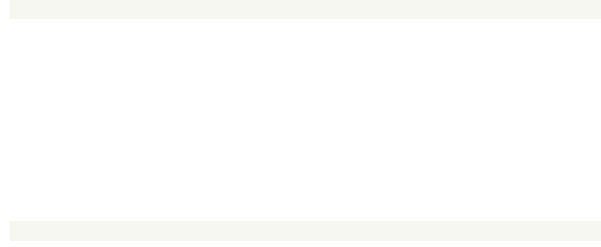
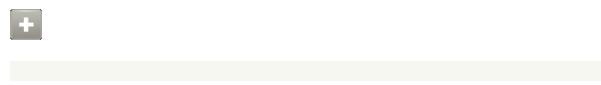




## Fast Boot Settings

---

### Fast Boot Settings









## Appendix

Specifications.....	74
Materials.....	74
Customer Service.....	75

## Specifications

### Model

Item	Description
Weight <sup>1</sup>	Battery installed: 131 g
Continuous Talk Time <sup>1</sup>	3G: 650 minutes GSM: 430 minutes
Continuous Standby Time <sup>1</sup>	4G: 178 hours 3G: 420 hours GSM: 400 hours
Charging Time <sup>1</sup>	180 minutes
Dimensions (W x H x D) <sup>1</sup>	65 x 133 x 9,9 mm
Maximum Output	3G: 0,20 W GSM 1800/1900: 0,89 W GSM 900: 1,78 W

<sup>1</sup> Approximate value

### Battery

Item	Description
Voltage	3,7 V
Type	Lithium-ion Polymer
Capacity	1930 mAh
Dimensions (W x H x D) <sup>1</sup>	56,5 x 56,25 x 5,8 mm

<sup>1</sup> Approximate value

## Materials

### 201HW

Parts	Material/Finishing
Power Key	PC resin + rubber/matte UV
Volume Up/Down Key	PC resin + rubber/matte UV
Earpiece	Stainless steel/PVD
Display	Glass
Battery Cover	PC resin/hard polyurethane (flame black) PC resin/PPVD (lightning black)
Cover (Front)	PC resin (GF-9)/softtouch
Rear Cover + Antenna	MEP RC3730/LDS
Camera Lens	MR58
Camera Lens Ring	Aluminum/anodized
Flash Lens	PMMA
3,5mm Headphone Port	Copper alloy
External Device Port	LCP, SUS/aluminum tin, bottom surface gold plating
SD Card Slot	SUS, LCP
USIM Card Slot	SUS, LCP
FPC	PI
Screws	AISI-1018

### Battery

Parts	Material/Finishing
Exterior	PP
Terminals	Gold-plated copper

### AC Charger

Parts	Material/Finishing
Plug	Copper-lead alloy
Exterior	PC resin, ABS resin
USB Connector	Copper-lead alloy

## Micro USB Cable

Parts	Material/Finishing
Exterior	PVC
USB Plug	Iron, brass/tin-plated nickel
Micro USB Plug	Stainless steel, phosphor bronze

## Earphone with Mic

Parts	Material/Finishing
Plug	Brass/gold plating
Earphone	ABS resin, PVC, stainless steel
Mic	ABS resin
Cable	Thermoplastic elastomer resin

## Customer Service

For after-sales service information, visit your nearest WILLCOM Plaza/WILLCOM Counter Shop or contact WILLCOM.

### Contacting WILLCOM





## Safety Precautions

Safety Precautions.....	78
General Notes.....	83
RF Exposure Information/Specific Absorption Rate* (SAR) Information.....	86

## Safety Precautions




Read safety precautions before using handset.

Observe precautions to avoid injury to self or others, or damage to property.

WILLCOM is not liable for any damages resulting from use of this product.







### Safety Precautions

These labels indicate the degree of risk from improper use. Make sure you thoroughly understand their meanings before reading on.

Mark	Descriptions
 <b>DANGER</b>	Great risk of death or serious injury <sup>1</sup> from improper use
 <b>WARNING</b>	Risk of death or serious injury <sup>1</sup> from improper use
 <b>CAUTION</b>	Risk of minor injury <sup>2</sup> or damage to property <sup>3</sup> from improper use

- 1 Serious injury includes loss of sight, injury, burns (high/low-temperature), electric shock, bone fracture, poisoning, etc. leaving aftereffects and requiring hospitalization or long-term hospital visits.
- 2 Minor injury includes burns, electric shock, etc. not requiring hospitalization or long-term hospital visits.
- 3 Damage to property refers to damage extended to home or possessions as well as livestock, pets, etc.

These symbols indicate prohibited or compulsory actions. Make sure you thoroughly understand their meanings before reading on.

Mark	Descriptions
 Prohibited	Prohibited actions
 Do Not Disassemble	Disassembly prohibited
 Avoid Liquids Or Moisture	Exposure to liquids prohibited
 Do Not Use Wet Hands	Use with wet hands prohibited
 Compulsory	Compulsory actions
 Disconnect Power Source	Unplug Charger from outlet

### Handset, Battery, USIM Card, Earphone with Mic, Micro USB Cable & AC Charger

#### DANGER



Compulsory

Use specified Battery, Earphone with Mic, AC Charger and Micro USB Cable only.

Non-specified accessory use may cause Battery to leak, overheat, burst or ignite, or impair hearing due to Earphone with Mic volume, or cause AC Charger and Micro USB Cable to short-circuit, overheat, ignite, cause electric shock, malfunction, etc.



Do Not Disassemble

Do not disassemble, modify or solder.

May cause fire, injury, electric shock or malfunction. Battery may leak, overheat, burst or ignite. Modifying handsets is prohibited by the Radio Law and subject to a penalty.



Avoid Liquids Or Moisture

Keep away from water.

Do not let liquid-exposed handset/related hardware remain wet; do not charge wet Battery. Doing so may cause overheating, electric shock, fire, injury or malfunction. Use handset/related hardware properly/appropriately.



Prohibited

Do not charge Battery, use or expose handset/related hardware to extreme heat (e.g. near fire or source of heat, in direct sunlight, inside vehicles, etc.). Do not charge Battery, leave, use, or be carrying handset/related hardware in a warm place or where heat collects, such as under a kotatsu (blanketed warming table) or electric blanket, next to a kairo (worn warming patch), etc.

May cause warping/malfunction; Battery may leak, overheat, ignite or burst. Handset or related hardware may become too hot to touch, leading to burn injuries, etc.



Prohibited

Do not force Battery or Micro USB Cable into handset.

Check the direction and retry.

Battery may leak, overheat, burst, ignite, etc.



## WARNING



Prohibited

Do not put handset, Battery, Earphone with Mic, Micro USB Cable or AC Charger in cooking appliances such as a microwave or pressure cooker.

May cause Battery to leak, overheat, burst or ignite or cause handset, Earphone with Mic, Micro USB Cable or AC Charger to heat, smoke or ignite or malfunction.



Compulsory

Keep handset off or do not charge Battery near gas station or places with fire/explosion risk.

Handset use near petrochemicals or other flammables may cause fire/explosion.



Prohibited

Do not apply strong shock or impact.

Battery may leak, overheat, burst or ignite, resulting in fire, electric shock, malfunction, etc.



Compulsory

Take these actions for odd sound, odor, smoke or abnormalities:

1. Grasp AC Charger to unplug it.
2. Power off.
3. Remove Battery from handset, being careful of burn or injury.

Continued use may cause fire, electric shock, etc.



Prohibited

Keep liquids (water, pet urine, etc.) or conductive material (pencil lead, metallic strip, metal jewelry, hairpin, etc.) away from charging terminals, External Device Port and Headphone Port.

May cause short circuit, resulting in fire, malfunction, etc.

## CAUTION



Prohibited

Do not place handset on unstable/uneven surfaces.

Handset or related hardware may fall, resulting in injury, malfunction, etc.; take added care when Vibration is set or while charging.



Compulsory

Keep handset or related hardware out of infants' reach.

Infants may swallow handset or related hardware resulting in injuries.



Compulsory

A guardian should supervise use by children and insure handset is used as instructed.

Failure to do so may result in injuries.

### Battery

Check battery type on Battery label. Properly use and dispose of Battery according to type.

Label	Battery Type
Li-ion 00	Lithium-ion polymer battery

**⚠ DANGER**

Prohibited

Do not dispose of Battery in fire.

May cause Battery to leak, rupture, ignite, etc.



Prohibited

Do not damage (nail, hammer, stomp, etc.) Battery or subject it to strong impact/shock.

May cause Battery to leak, overheat, rupture, ignite, etc.



Prohibited

Keep metal objects (pins, etc.) away from Battery terminals. Do not carry or store conductive materials (e.g. pencil lead, metal fragments, metal necklaces, hairpins, etc.) together with Battery.

May cause Battery to leak, overheat, rupture, ignite, etc.



Compulsory

If battery fluid gets into eyes, immediately rinse with clean water and consult a doctor. Do not rub eyes.

Failing to do so may result in loss of eyesight, etc.

**⚠ WARNING**

Compulsory

If battery fluid gets on your skin or clothing, immediately stop handset use and rinse with clean water.

Battery fluid may harm your skin, etc.



Compulsory

If Battery is not fully charged even after specified charging time, stop charging.

May cause Battery to leak, overheat, rupture, ignite, etc.



Compulsory

If you notice an unusual odor, overheating, discoloration, deformation, etc. while using, charging or storing Battery, remove it from handset and keep it away from fire. Be careful not to burn or injure yourself.

Continued use may cause Battery to leak, overheat, rupture, ignite, etc.



Compulsory

Do not allow pets to bite Battery.

May cause Battery to leak, overheat, rupture or ignite, or cause device malfunction or fire.

**⚠ CAUTION**

Prohibited

Do not dispose of Battery together with ordinary waste.

Bring to a recycling center or WILLCOM Plaza/WILLCOM Counter after insulating the terminals with tape. Be sure to observe local regulations on battery disposal.

## Handset

**WARNING**

Prohibited

Do not use handset while driving or cycling.

Accidents may result. Phone use while driving or cycling is prohibited by law and subject to a penalty; park legally before use.



Compulsory

Power off near electronic devices or equipment operating on high precision control or weak signals.

May cause electronic malfunctions, etc.

\*Take added care near these devices: Hearing aids, implanted cardiac pacemakers, implanted cardioverter defibrillators, other electronic medical equipment, fire detectors, automatic doors, and other automatically controlled devices or equipment.



Compulsory

Power off before boarding aircraft to avoid possible radio wave interference with aircraft operations.

If mobile phone use is allowed on board, follow airline or cabin crew instructions regarding handset use.



Compulsory

Users with a heart condition should adjust ringtone Vibration and Volume as needed.

May cause heart damage.



Compulsory

During thunderstorms, power off immediately and seek shelter.

Lightning strikes or electric shock may occur.



Prohibited

Do not position Flash close to the faces of others. Do not look at Flash directly while in use. Do not point Flash at the eyes of others.

It may harm eyesight. Do not photograph infants up close. Flash may impair vision, causing accidents.

**CAUTION**

Prohibited

Do not use handset when it may affect a vehicle's electronic equipment.

Handset use may affect devices and lead to unsafe driving.



Compulsory

If you experience any skin irritation associated with handset use, discontinue handset use and consult a doctor.

Metal and other materials may cause skin irritation, rashes, or itchiness depending on your physical condition.

For more information, see [Materials](#).



Prohibited

Keep handset away from magnetic cards, etc.

Data on bank cards, credit cards, telephone cards, floppy disks, etc. may be lost.



Compulsory

Handset may become hot while in use, especially at high temperature.

Prolonged contact with skin may cause burn injuries.



Prohibited

Always maintain some distance from Speaker while ringtones, music or other handset sounds play.

Excessive volume may damage ears or hearing.



Compulsory

Moderate handset Volume when using Headsets.

Prolonged use and excessive volume may damage ears or hearing.

## AC Charger &amp; Micro USB Cable

**WARNING**

Prohibited

Do not cover/wrap AC Charger and Micro USB Cable while charging.

AC Charger and Micro USB Cable may overheat, resulting in fire, malfunction, etc.



Prohibited

Use the specified voltage only.

Non-specified voltages may cause fire or malfunction.  
AC Charger: 100 V to 240 V AC (household AC outlet only)  
Do not use power adapters. Doing so may cause fire, electric shock or malfunction.



Disconnect Power Source

Unplug AC Charger if you are not going to use it for long periods.

May cause electric shock, fire or malfunction.



Disconnect Power Source

If liquids (water, pet urine, etc.) seep inside AC Charger, unplug it immediately.

May cause electric shock, smoke or fire.



Compulsory

If plug is dusty, grasp AC Charger to unplug it, then clean with dry cloth.

May cause fire.



Compulsory

Do not place electrically conductive objects (pencil lead, metallic strip, metal jewelry, hairpin, etc.) in contact with the plug or charging terminals.

May cause electric shock, short circuit, fire, etc.



Do Not Use Wet Hands

Do not plug in/unplug AC Charger with wet hands.

May cause electric shock or malfunction.



Prohibited

Do not touch Charger if thunder is audible.

May cause electric shock, etc.

**CAUTION**

Disconnect Power Source

Grasp AC Charger to unplug it before cleaning.

May cause electric shock, etc.



Compulsory

Always grasp AC Charger (not Micro USB Cable) to disconnect it.

Pulling Micro USB Cable may damage cord, causing electric shock, fire, etc.



Prohibited

Do not subject AC Charger to strong shock or impact while it is plugged into the outlet.

May cause injury or malfunction.

## Handset Use & Electronic Medical Equipment

### WARNING



Compulsory

Persons with an implanted pacemaker or defibrillator should keep handset at least 22 cm away from the device.

Radio waves may interfere with implanted pacemakers or defibrillators.



Compulsory

When using electronic medical equipment (other than implanted cardiac pacemakers/defibrillators) outside medical facilities, check with the equipment vendor or distributor for information about the effects of radio waves.

Handset radio waves may affect electronic medical equipment.



Compulsory

Handset radio waves may affect electronic medical equipment. Observe these guidelines in medical institutions:

- Do not take handset into operating rooms, or intensive or coronary care units.
- Keep handset turned off in hospital wards.
- Even in lobbies or other places where handset use is permitted, keep handset off near electronic medical equipment.
- Follow medical facility rules on handset use.



Compulsory

Power off in crowded places such as trains.

People with implanted pacemakers or defibrillators may be near. Radio waves may interfere with implanted pacemakers or defibrillators causing such devices to malfunction.

## General Notes

### General Use

- Handset transmissions may be disrupted inside buildings, tunnels or underground, or when moving into/out of such places.
- WILLCOM is not liable for damages from accidental loss/alteration/repair of handset/SD Card information (Contacts, image/sound files, etc.). Back-up important information.
- Use handset without disturbing others.
- Handsets are radios as stipulated by the Radio Law. Under the Radio Law, handsets must be submitted for inspection upon request.
- WILLCOM is not liable for any damages resulting from use of this manual and products described in this manual.
- Handset use near landlines, TVs or radios may cause interference.
- Beware of eavesdropping.  
Digital signals reduce interception, however transmissions may be overheard. Deliberate/accidental interception of communications constitutes eavesdropping. "Eavesdropping" means radio communication is received by another receiver deliberately or accidentally.
- Take a note of pattern, PIN, or password for canceling Screen Lock set with handset. If you forget them, contact the WILLCOM Service Center.
- Download and install applications on this handset via Google Play (developed by Google Inc.) at your own risk. WILLCOM is not responsible for user installed application content (quality, reliability, legality, appropriateness, accuracy, etc.) or malfunctions installed applications may cause (due to viruses, etc.).

## Handset care

- Handset is not water-proof. Avoid exposure to liquids and high humidity.
  - Keep handset away from precipitation.
  - Cold air from air conditioning, etc. may condense causing corrosion.
  - Do not put handset in damp places like bathrooms.
  - On the beach, keep handset away from sun and surf.
  - Perspiration in handset may cause malfunction.
  - Use Micro USB Cable and AC Charger indoors.
- If handset is left without Battery for an extended period or with an exhausted one, data may be altered/lost. WILLCOM is not liable for any resulting damages.
- Use handset within temperatures of 0°C to 40°C and humidity 25% to 75%. Avoid extreme temperatures/direct sunlight.
- Handset may become warm during use or charging. This is not malfunction.
- Exposing lens to direct sunlight may damage color filter and affect image color.
- Soiled terminals may cause poor connection. If the terminals are dirty, use a dry cloth or cotton swab to wipe them clean.
- Clean handset with dry, soft cloth. Using alcohol, thinner, etc. may damage it.
- Avoid forceful rubbing or scratching handset Display.
- Do not subject handset to excessive force.
  - Do not sit down with handset in a back pocket.
  - Do not place heavy objects on a bag with handset inside.
- Do not remove nameplate from handset; doing so invalidates warranty.
- LCD is manufactured with high precision technology, however, some pixels may appear darker/brighter.
- When strong force is applied to Display or handset, a portion of Display may darken for a moment. This is not malfunction.
- Connect only specified products to External Device Port.
- While walking, moderate earphone volume to make sounds around you audible and help avoid accidents.
- When inserting/removing USIM Card or SD Card, make sure to power off first and remove Battery Cover/Battery. For removing procedures, see User Guide.
- If handset deactivates, freezes, or does not accept any input, remove and reinsert Battery, and then power on again.

## Camera

- Do not expose Camera Lens to direct sunlight. Concentrated sunlight through Lens may cause handset to malfunction.
- Be sure to try taking and previewing pictures before using Camera on important occasions like wedding ceremonies.
- If you use handset in a wrongful manner, you may be punished according to laws or ordinances (nuisance prevention ordinance, etc.). Be considerate of privacy of others when taking/recording pictures/videos or sending images.
- Do not capture/record sold books or text prohibited from capturing/recording.

## Urgent News (Japanese)

- Urgent News Setting is enabled by default.
- Urgent News messages appear in Japanese.
- Upon reception, Urgent News tone sounds even in Silent mode.
- Urgent News messages cannot be received during calls or other transmissions, or in poor signal conditions.
- Urgent News accuracy may vary with signal conditions/handset location.
- Enabling Urgent News may reduce Continuous Standby Time.
- WILLCOM is not responsible for any losses associated with Urgent News reception, etc.

## Bluetooth® & Wi-Fi (Wireless LAN)

- Handset Bluetooth® and Wi-Fi functions are certified to be in compliance with Japan radio standards. Handset does not require a wireless radio operator license for use.
- Given the above, the actions below may be punishable by law:
  - Disassembling/modifying handset
- Handset may not connect/operate correctly with all Bluetooth® or Wi-Fi devices.
- Handset complies with Bluetooth® and Wi-Fi security standards, however, communication may be intercepted depending on the environment/settings. Take care when using Bluetooth® or Wi-Fi.
- WILLCOM is not responsible for data leaked via Bluetooth® or Wi-Fi communication.
- Bluetooth® and Wi-Fi devices operate on the same frequency band used by industrial or scientific machinery, consumer electronics (like microwave ovens), medical equipment, (licensed) premises radio stations used to identify mobile units used in manufacturing lines, (unlicensed) specified low power radios and (licensed) amateur radios.
  1. Before using handset Bluetooth® or Wi-Fi functions, confirm that premises radio stations, specified low power radios, and amateur radios are not in use nearby.
  2. If handset Bluetooth® or Wi-Fi function use interferes with premises radio stations, immediately change frequency band, or halt usage and take steps (set up a partition, etc.) to prevent crosstalk.
  3. If handset Bluetooth® or Wi-Fi function use interferes with specified low power radios or amateur radios, contact [WILLCOM Service Center](#), General Information.

## Wireless Frequencies & Modulations

Bluetooth® and Wi-Fi frequency information appears on battery cavity label:




2.4 : Frequency Band: 2.4 GHz

Modulations: FH-SS, DS-SS, OFDM

Estimated Range of Radio Frequency Interference

1: FHSS RFI up to 10 m

4: DSSS RFI up to 40 m

 : Utilizes 2401 - 2483 MHz band with mobile device bandwidth differentiation

- Channels 1 to 13 can be set with handset Wi-Fi. Connection is available only to access points on these channels.
- Available channels vary by country.
- For use aboard aircraft, contact the airline beforehand.
- Wi-Fi use may be limited in some countries. Confirm local frequency availability/laws before use.

## Wi-Fi (Wireless LAN) Cautions

Do not use Wi-Fi near magnetic devices such as electrical appliances or AV/OA devices, or radio waves.

- Magnetic/radio waves may hinder or disable communication. Avoid microwave ovens.
- Use near a TV or radio, etc. may cause interference; may affect TV reception.
- If there are multiple Wi-Fi access points using the same channel, search may fail.

## Bluetooth® & Wi-Fi Device Interference

Bluetooth® and Wi-Fi (IEEE802.11b/g/n) operate on the same 2.4 GHz frequency band. When using Bluetooth® near Wi-Fi access points/devices, interference may hinder/block Bluetooth® communication. Move or turn off Wi-Fi device to restore Bluetooth® communication.

## Copyrights

The rights of copyright holders to literary works, music, still images, video, computer programs, databases, etc. are protected by copyright laws. You may copy these materials for private use only. Copying for purposes other than the above (including data format conversion), modifying, transferring copies, distributing on networks may be subject of compensation for losses or of prosecution for "copyright infringement" or "copyright holder rights infringement." If copying using this product, observe copyright laws. Handset is equipped with cameras. Observe copyright laws when shooting with these cameras.

## Electromagnetic Safety

For body-worn operation, this phone has been tested and meets RF exposure guidelines when used with accessories containing no metal, that position handset a minimum of 10 mm from the body.

Use of other accessories may not ensure compliance with RF exposure guidelines.

## FCC Notice

This mobile device complies with part 15 of the FCC Rules. Operation is subject to the following two conditions:

(1) This device may not cause harmful interference, and (2) this device must accept any interference received, including interference that may cause undesired operation.

Changes or modifications not expressly approved by the manufacturer responsible for compliance could void the user's authority to operate the equipment.

## FCC RF Exposure Information

Your handset is a radio transmitter and receiver. It is designed and manufactured not to exceed the emission limits for exposure to radio frequency (RF) energy set by the Federal Communications Commission of the U.S. Government.

The guidelines are based on standards that were developed by independent scientific organization through periodic and thorough evaluation of scientific studies. The standards include a substantial safety margin designed to assure the safety of all persons, regardless of age and health.

The exposure standard for wireless handsets employs a unit of measurement known as the Specific Absorption Rate, or SAR.

The SAR limit set by the FCC is 1.6 W/kg. The tests are performed in positions and locations (e.g. at the ear and worn on the body) as required by the FCC for each model.

The highest SAR value for this model handset as reported to the FCC when tested for use at the ear is 0.439 W/kg, and when worn on the body in a holder or carry case, is 0.716 W/kg.

Body-worn Operation; This device was tested for typical body-worn operations with the back of the handset kept 1.0 cm from the body. To maintain compliance with FCC RF exposure requirements, use accessories that maintain a 1.0 cm separation distance between the user's body and the back of the handset. The use of beltclips, holsters and similar accessories should not contain metallic components in its assembly.

The use of accessories that do not satisfy these requirements may not comply with FCC RF exposure requirements, and should be avoided. The FCC has granted an Equipment Authorization for this model handset with all reported SAR levels evaluated as in compliance with the FCC RF emission guidelines. SAR information on this model handset is on file with the FCC and can be found under the Display Grant section of <http://www.fcc.gov/oet/ea/> after searching on FCC ID QISU9201L.

Additional information on Specific Absorption Rates (SAR) can be found on CTIA-The Wireless Association® (CTIA) website at <http://www.ctia.org/>.

## European RF Exposure Information

Your mobile device is a radio transmitter and receiver. It is designed not to exceed the limits for exposure to radio waves recommended by international guidelines. These guidelines were developed by the independent scientific organization ICNIRP and include safety margins designed to assure the protection of all persons, regardless of age and health. The guidelines use a unit of measurement known as the Specific Absorption Rate, or SAR. The SAR limit for mobile devices is 2.0 W/kg and the highest SAR value for this device when tested at the ear was 0.562 W/kg\*. As mobile devices offer a range of functions, they can be used in other positions, such as on the body as described in this User Guide\*\*. In this case, the highest tested SAR value is 0.996 W/kg\*\*\*. As SAR is measured utilizing the devices highest transmitting power the actual SAR of this device while operating is typically below that indicated above. This is due to automatic changes to the power level of the device to ensure it only uses the minimum level required to reach the network.

The World Health Organization has stated that present scientific information does not indicate the need for any special precautions for the use of mobile devices. They note that if you want to reduce your exposure then you can do so by limiting the length of calls or using a hands-free device to keep the mobile phone away from the head and body.

\*The tests are carried out in accordance with international guidelines for testing.

\*\* Please see [Electromagnetic Safety](#) for important notes regarding body worn operation.

\*\*\*A method of measuring SAR when a mobile phone is used at positions other than at the ear was established in March 2010 through an international standard (IEC62209-2). MIC technical regulation was reported in October 2011 by the Information and Communications Council.

World Health Organization

<http://www.who.int/emf>

List of Specific Absorption Rates (SAR) for radio waves by smartphone model

<http://mb.softbank.jp/mb/support/sar/> (Japanese)

## RF Exposure Information/ Specific Absorption Rate\* (SAR) Information

### RF Exposure Information/Specific Absorption Rate\* (SAR) Information

This mobile phone 201HW meets the MIC's\*\*\*\* technical regulation for exposure to radio waves.

The technical regulation\* established permitted levels of radio frequency energy, based on standards developed by independent scientific organizations through periodic and thorough evaluation of scientific studies.

The regulation employs a unit of measurement known as the Specific Absorption Rate, or SAR.

The SAR limit is 2 watts/kilogram (W/kg)\*\* averaged over ten grams of tissue.

The limit includes a substantial safety margin designed to assure the safety of all persons, regardless of age and health. The value of the limit is equal to the international guidelines recommended by ICNIRP\*\*\*\*\*.

The highest SAR value for this mobile phone is 0.801 W/kg when tested for use at the ear.

While there may be differences between the SAR levels of various phones and at various positions, all phones meet MIC's technical regulation.

Although the SAR is determined at the highest certified power level, the actual SAR of the phone during operation can be well below the maximum value.

Use at positions other than at the ear

This mobile phone may be used at positions other than at the ear. By using an accessory such as a belt clip holster that maintains a 1.0 cm separation with no metal (parts) between the body and the mobile phone, this mobile phone will comply with international guidelines for radio wave protection (\*\*\*).

The World Health Organization has announced that "A large number of studies have been performed over the last two decades to assess whether mobile phones pose a potential health risk. To date, no adverse health effects have been established as being caused by mobile phone use."

For more information about SAR, see the following websites:

- Ministry of Internal Affairs and Communications (MIC)  
<http://www.tele.soumu.go.jp/e/sys/ele/body/index.htm>
- Association of Radio Industries and Businesses (ARIB)



<http://www.arib-emf.org/index02.html> (Japanese)

\* The technical regulation is provided in Article 14-2 of the Ministry Ordinance Regulating Radio Equipment.

\*\* Provided for in "Radio-radiation protection guidelines," reported in 1997 by the Telecommunications Technology Council, Ministry of Posts and Telecommunications.

\*\*\* A method of measuring SAR when a mobile phone is used at positions other than at the ear was established in March 2010 through an international standard (IEC62209-2). MIC technical regulation was reported in October 2011 by the Information and Communications Council.

\*\*\*\* Ministry of Internal Affairs and Communications

\*\*\*\*\* International Commission on Non-Ionizing Radiation Protection

Standards of the Federal Communications Commission (FCC) of the U.S. Government and information from the E.U. are given as information relating to RF exposure. For details, see "[FCC RF Exposure Information](#)" and "[European RF Exposure Information](#)."



## 201HW User Guide Index

<b>A</b>	
About Phone.....	70
Accounts & Sync Settings.....	66
Address Book.....	35
Apps Settings.....	65
<b>B</b>	
Backup & Reset Settings.....	68
Basic Operations.....	16
Battery Installation.....	11
Battery Settings.....	64
Bluetooth®.....	54
Bluetooth Settings.....	60
<b>C</b>	
Calling.....	30
Calling Outside Japan.....	56
Charging Battery.....	13
Creating/Sending Gmail.....	40
Customer Service.....	75
<b>D</b>	
Data Usage Settings.....	61
Date & Time Settings.....	68
Developer Options Settings.....	69
<b>F</b>	
Fast Boot Settings.....	70
<b>G</b>	
General Notes.....	83
Google Account.....	19
Google Play™.....	20
<b>H</b>	
Handset Phone Number.....	17
Home Screen Basics.....	26
<b>I</b>	
Image Files.....	50
Imaging.....	46
Internet Mail Settings.....	41
Introduction.....	3
<b>L</b>	
Language & Input Settings.....	66

## M

Materials.....	74
Messaging.....	38
Mobile Manners.....	17
More Settings.....	62
Music Files.....	50

## N

Notifications Window.....	28
---------------------------	----

## O

Optional Services.....	31
------------------------	----

## P

Package Contents.....	6
Parts & Functions.....	6
Power On/Off.....	14
Power Saving Mode Settings.....	65

## R

RF Exposure Information/Specific Absorption Rate* (SAR) Information.....	86
---	----

## S

Safety Precautions.....	78
Screen Lock.....	23
SD Card Installation.....	9
Security Codes.....	22
Sending WILLCOM Mail/SMS.....	38
Software Updates.....	24
Sound Settings.....	63
Specifications.....	74
Status Bar.....	27

## T

Tethering Option.....	53
Text Entry.....	18
Touchscreen Operations.....	14

## U

USIM Card Installation.....	7
USIM PIN.....	22

## W

Web Browsing.....	41
Wi-Fi.....	52
Wireless & Networks Settings.....	60





## 201HW User Guide

September 2013, First Edition

Manufacturer : HUAWEI TECHNOLOGIES CO., LTD.